



1 Chapel Street Elevation  
A301 Scale: 3/32" = 1'-0"

### MATERIAL PALETTE

- 1 FIBRE CEMENT PANEL SIDING, "WHITE / TBD" COLOUR
- 2 FIBRE CEMENT PANEL SIDING, "BLACK / TBD" COLOUR
- 3 FIBRE CEMENT PANEL SIDING, SMOOTH TEXTURE, IN 'CHARCOAL' GREY
- 4 FIBRE CEMENT PANEL SIDING, SMOOTH TEXTURE, IN 'LIGHT' GREY
- 5 WOOD-LOOK METAL SIDING IN "TBD" COLOUR
- 6 WOOD-LOOK METAL FINIS IN "TBD" COLOUR
- 7 LOW SLOPE MEMBRANE ROOF, IN DARK GREY TONES
- 8 FIBRE-CEMENT PANEL FASCIA, SMOOTH TEXTURE, IN 'CHARCOAL', WITH ALUMINIUM CAP FLASHING IN CHARCOAL GREY
- 9 SOFFIT: WOOD-LOOK METAL SOFFIT IN "TBD" COLOUR
- 10 CAST-IN-PLACE CONCRETE WALL AND COLUMNS, SACK FINISHED, PAINT SEALED
- 11 CAST-IN-PLACE CONCRETE WALL, HORIZONTAL CEDAR LINER FINISHED, PAINT SEALED
- 12 INSULATED CONCRETE PANEL, 'DARK' GREY TONES
- 13 ALUMINIUM STORE FRONT GLAZING, IN 'CHARCOAL' GREY
- 14 ALUMINIUM STORE FRONT WINDOWS IN 'CHARCOAL' GREY
- 15 ALUMINIUM STORE FRONT DOORS, IN 'CHARCOAL' GREY, WITH CLEAR TEMPERED GLASS INFILL PANELS
- 16 VINYL WINDOWS, IN 'CHARCOAL' GREY
- 17 VINYL SLIDING GLASS DOORS, IN 'CHARCOAL' GREY
- 18 VINYL SWING GLASS DOOR, IN 'CHARCOAL' GREY
- 19 VINYL SWING DOOR, IN 'CHARCOAL' GREY, WITH TRANSOM GLAZING ABOVE (ENTRY @ WALKWAY, TBC)
- 20 STEEL DOOR, IN 'CHARCOAL' GREY
- 21 GUARDRAIL HEIGHT PARAPET WALLS, WITH 1 FIBRE CEMENT PANEL SIDING, IN "WHITE / TBD" COLOUR
- 22 GUARDRAIL HEIGHT PARAPET WALLS, WITH 2 FIBRE CEMENT PANEL SIDING, IN "BLACK / TBD" COLOUR
- 23 ALUMINIUM RAILING AND GUARDRAILS, IN 'CHARCOAL GREY' FINISH, WITH FROSTED TEMPERED GLASS PANELS
- 24 PRIVACY SCREEN: WOOD-LOOK METAL FINIS
- 25 BALCONIES WITH VINYL DECKING, IN LIGHT GREY
- 26 GARAGE O/H DOOR, OPEN PICKET STYLE, IN 'BLACK'
- 27 STEEL COLUMN, IN "CHARCOL GREY"
- 28 STEEL DOOR, IN "LIGHT GREY"
- 29 RIVER ROCK DECORATIVE STONE



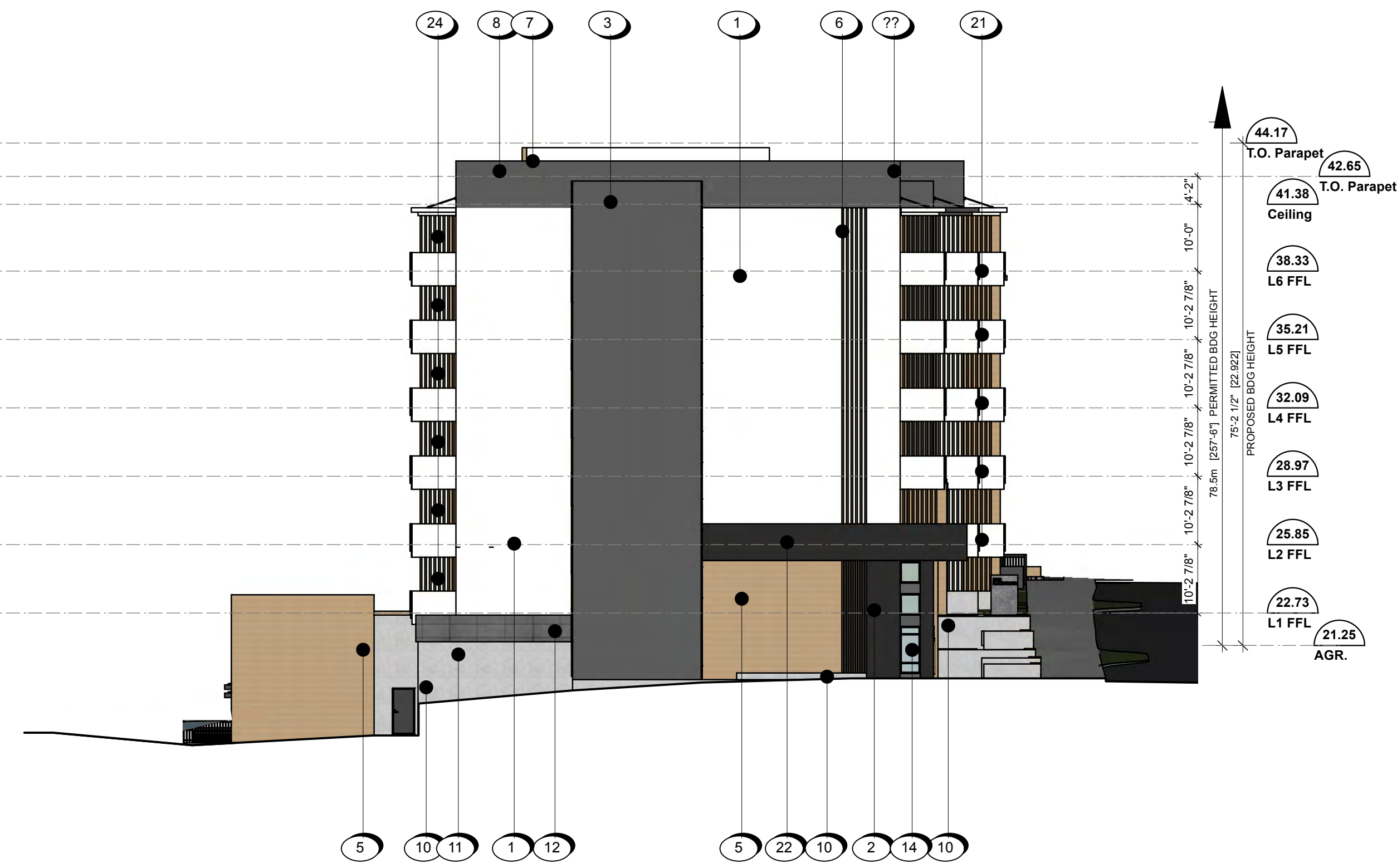
1 Skinner Street Elevation  
 A302 Scale: 3/32" = 1'-0"

**MATERIAL PALETTE**

- 1 FIBRE CEMENT PANEL SIDING, "WHITE / TBD" COLOUR
- 2 FIBRE CEMENT PANEL SIDING, "BLACK / TBD" COLOUR
- 3 FIBRE CEMENT PANEL SIDING, SMOOTH TEXTURE, IN 'CHARCOAL' GREY
- 4 FIBRE CEMENT PANEL SIDING, SMOOTH TEXTURE, IN 'LIGHT' GREY
- 5 WOOD-LOOK METAL SIDING IN "TBD" COLOUR
- 6 WOOD-LOOK METAL FINIS IN "TBD" COLOUR
- 7 LOW SLOPE MEMBRANE ROOF, IN DARK GREY TONES
- 8 FIBRE-CEMENT PANEL FASCIA, SMOOTH TEXTURE, IN 'CHARCOAL', WITH ALUMINIUM CAP FLASHING IN CHARCOAL GREY
- 9 SOFFIT: WOOD-LOOK METAL SOFFIT IN "TBD" COLOUR
- 10 CAST-IN-PLACE CONCRETE WALL AND COLUMNS, SACK FINISHED, PAINT SEALED
- 11 CAST-IN-PLACE CONCRETE WALL, HORIZONTAL CEDAR LINER FINISHED, PAINT SEALED
- 12 INSULATED CONCRETE PANEL, 'DARK' GREY TONES
- 13 ALUMINIUM STORE FRONT GLAZING, IN 'CHARCOAL' GREY
- 14 ALUMINIUM STORE FRONT WINDOWS IN 'CHARCOAL' GREY
- 15 ALUMINIUM STORE FRONT DOORS, IN 'CHARCOAL' GREY, WITH CLEAR TEMPERED GLASS INFILL PANELS
- 16 VINYL WINDOWS, IN 'CHARCOAL' GREY
- 17 VINYL SLIDING GLASS DOORS, IN 'CHARCOAL' GREY
- 18 VINYL SWING GLASS DOOR, IN 'CHARCOAL' GREY
- 19 VINYL SWING DOOR, IN 'CHARCOAL' GREY, WITH TRANSOM GLAZING ABOVE (ENTRY @ WALKWAY, TBC)
- 20 STEEL DOOR, IN 'CHARCOAL' GREY
- 21 GUARDRAIL HEIGHT PARAPET WALLS, WITH 1 FIBRE CEMENT PANEL SIDING, IN "WHITE / TBD" COLOUR
- 22 GUARDRAIL HEIGHT PARAPET WALLS, WITH 2 FIBRE CEMENT PANEL SIDING, IN "BLACK / TBD" COLOUR
- 23 ALUMINIUM RAILING AND GUARDRAILS, IN 'CHARCOAL GREY' FINISH, WITH FROSTED TEMPERED GLASS PANELS
- 24 PRIVACY SCREEN: WOOD-LOOK METAL FINIS
- 25 BALCONIES WITH VINYL DECKING, IN LIGHT GREY
- 26 GARAGE O/H DOOR, OPEN PICKET STYLE, IN 'BLACK'
- 27 STEEL COLUMN, IN "CHARCOL GREY"
- 28 STEEL DOOR, IN "LIGHT GREY"
- 29 RIVER ROCK DECORATIVE STONE



1 North Elevation  
A303 Scale: 3/32" = 1'-0"



2 South Elevation  
A303 Scale: 3/32" = 1'-0"

**MATERIAL PALETTE**

- 1 FIBRE CEMENT PANEL SIDING, "WHITE / TBD" COLOUR
- 2 FIBRE CEMENT PANEL SIDING, "BLACK / TBD" COLOUR
- 3 FIBRE CEMENT PANEL SIDING, SMOOTH TEXTURE, IN 'CHARCOAL' GREY
- 4 FIBRE CEMENT PANEL SIDING, SMOOTH TEXTURE, IN 'LIGHT' GREY
- 5 WOOD-LOOK METAL SIDING IN "TBD" COLOUR
- 6 WOOD-LOOK METAL FINIS IN "TBD" COLOUR
- 7 LOW SLOPE MEMBRANE ROOF, IN DARK GREY TONES
- 8 FIBRE-CEMENT PANEL FASCIA, SMOOTH TEXTURE, IN 'CHARCOAL', WITH ALUMINIUM CAP FLASHING IN CHARCOAL GREY
- 9 SOFFIT: WOOD-LOOK METAL SOFFIT IN "TBD" COLOUR
- 10 CAST-IN-PLACE CONCRETE WALL AND COLUMNS, SACK FINISHED, PAINT SEALED
- 11 CAST-IN-PLACE CONCRETE WALL, HORIZONTAL CEDAR LINER FINISHED, PAINT SEALED
- 12 INSULATED CONCRETE PANEL, 'DARK' GREY TONES
- 13 ALUMINIUM STORE FRONT GLAZING, IN 'CHARCOAL' GREY
- 14 ALUMINIUM STORE FRONT WINDOWS IN 'CHARCOAL' GREY
- 15 ALUMINIUM STORE FRONT DOORS, IN 'CHARCOAL' GREY, WITH CLEAR TEMPERED GLASS INFILL PANELS
- 16 VINYL WINDOWS, IN 'CHARCOAL' GREY
- 17 VINYL SLIDING GLASS DOORS, IN 'CHARCOAL' GREY
- 18 VINYL SWING GLASS DOOR, IN 'CHARCOAL' GREY
- 19 VINYL SWING DOOR, IN 'CHARCOAL' GREY, WITH TRANSOM GLAZING ABOVE (ENTRY @ WALKWAY, TBC)
- 20 STEEL DOOR, IN 'CHARCOAL' GREY
- 21 GUARDRAIL HEIGHT PARAPET WALLS, WITH 1 FIBRE CEMENT PANEL SIDING, IN "WHITE / TBD" COLOUR
- 22 GUARDRAIL HEIGHT PARAPET WALLS, WITH 2 FIBRE CEMENT PANEL SIDING, IN "BLACK / TBD" COLOUR
- 23 ALUMINIUM RAILING AND GUARDRAILS, IN 'CHARCOAL GREY' FINISH, WITH FROSTED TEMPERED GLASS PANELS
- 24 PRIVACY SCREEN: WOOD-LOOK METAL FINIS
- 25 BALCONIES WITH VINYL DECKING, IN LIGHT GREY
- 26 GARAGE O/H DOOR, OPEN PICKET STYLE, IN 'BLACK'
- 27 STEEL COLUMN, IN 'CHARCOL GREY'
- 28 STEEL DOOR, IN 'LIGHT GREY'
- 29 RIVER ROCK DECORATIVE STONE